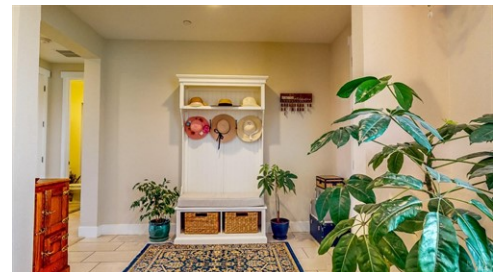




\$ 1,375,000



1728 Avila Ranch Drive, Petaluma, CA 94954

- » Beds: 4 | Baths: 3 Full
- » MLS #: 324024518
- » Single Family | 2,620 ft² | Lot: 6,098 ft²
- » More Info: 1728AvilaRanchDrive.IsForSale.com



Denise Lucchesi
 (707) 799-6948 (Mobile)
 (707) 769-7183 (Business)
denise@century21epic.com
<http://deniselucchesi.com/>

CENTURY 21® Epic

Epic
 616-612 Petaluma Boulevard South
 Petaluma, CA 94952

Breathtaking home, private backyard Oasis and perfect location, this home has it all. Gorgeous and comfort are compliments defining this home. Two levels, 1728 Avila Ranch Dr. presents four bedrooms and three full baths perfectly designed with a full bath and bedroom on the first floor. The kitchen is the heart of the home, and centrally located, featuring an island, a gas stovetop, granite countertops and an abundance of cabinetry plus bar seating. Chefs will be delighted with plenty of prep space perfect for casual meals or spectacular holiday feast. Upstairs is the private owner quarters with ensuite featuring soaking tub, designer shower and two vanities plus two walks in closets. Two additional spacious bedrooms and laundry complete the perfect harmony. Enjoy fabulous weather and dine al fresco on summer evening on your spacious patio, only after prepping meals with fresh home-grown ingredients from your own garden beds. There is so much to love here, and is offered with the Sonoma County lifestyle, offering hiking, biking trails, dining and entertainment, live music, Farmer's Markets all - with the beautiful, sought-after destination of the wine country just minutes away.

